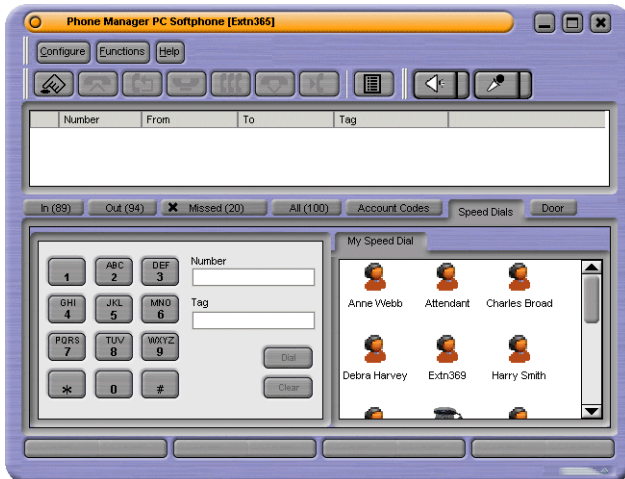


Avaya IP Soft phone

IP Office's Phone Manager Pro can be configured to operate as an IP Softphone
– 'Phone Manager PC Softphone' by use of license keys.



Avaya IP Soft Phone allows a PC to be used as a telephone on the IP Office. There is no need for an actual telephone when using the Avaya IP Soft Phone on the IP Office. The iPhoneManager (IPPRO RFA) gives you all of the features of the IP Office on your PC. Perfect for users who are not in the office, the Avaya IP Soft Phone will allow these employees to connect to the office with their PC using VOIP and make and receive phone calls as if they were actually in the office. The iPhoneManager RFA must be used in conjunction with the Phone Manager Pro RFA license.

Phone Manager PC Softphone has the same GUI as Phone Manager Pro, but adds the ability to make and receive phone calls and control call volume from the PC. Like Phone Manager Pro, Phone Manager PC Softphone communicates with the IP Office system unit via the wired or wireless LAN. The difference is that there is no physical telephone and conversation actually takes place via the PC's audio interface such as a sound card or USB headset.

Phone Manager PC Softphone has the significant advantage for mobile users with remote access to the LAN, providing 'a phone within their laptop' with all the features available as in the office.

Notes:

- ✓ Phone Manager PC Softphone requires on a multi-media PC running Windows 2000 and Windows XP operating systems with speakers and microphone installed. The use of a headset is strongly recommended. Operation through standard speakers and integral PC microphones is not recommended.

- ✓ The minimum PC specification is a Pentium 400 MHz (700 MHz recommended) or above with 128MB RAM minimum
- ✓ Phone Manager PC Softphone supports QoS in the form of DiffServ for both Windows XP and Windows 2000 when used in soft phone mode.
- ✓ When Phone Manager PC Softphone is used over a wireless LAN, no more than 3 simultaneous calls can be supported per access point.

Example:

So in order to use i.e. 1 soft phone on your PC you have to activate 2 licensees per one user 1 IP400 phone Manager PRO RFA1 (177468) and 1 license of IP400 IPPRO RFA1 (171992).